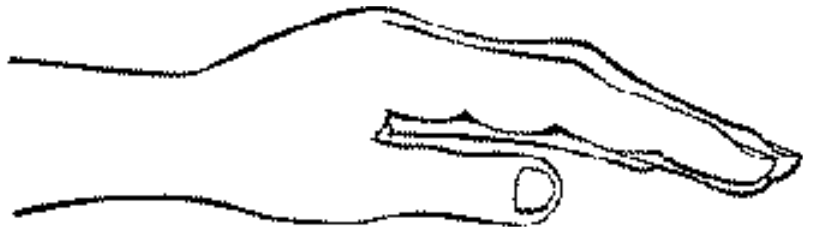
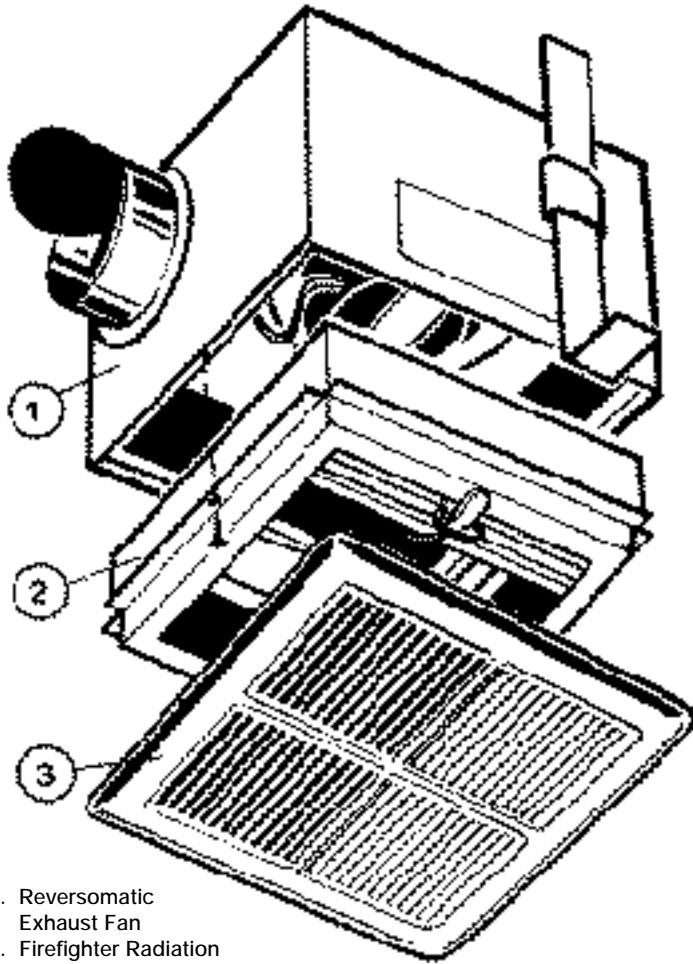


Fire Fighter



EXHAUST FAN WITH CEILING RADIATION DAMPER



The "Firefighter" is the simple solution for fire rated ceilings, that requires a maximum of 3 hours fire resistance. The "Firefighter" radiation damper and fan housing combination features the lowest height assembly in the industry. The REVERSOMATIC Ceiling fan, with built-in Fire Radiation Damper, offers the best protection against flame penetration and radiant heat.

All REVERSOMATIC "Firefighter" fans are factory-assembled as one complete unit to guarantee proper installation and consistent workmanship.

Now specify the perfect combination REVERSOMATIC ceiling exhaust fans with Built-in FIREFIGHTER dampers. Normal operation REVERSOMATIC fans perform their job of removing specified quantities of air quietly and efficiently. The Firefighter ceiling damper is normally in the open position out of the air stream. In case of fire, the fusible link separate, and a non-asbestos ceramic blanket closes off all air movement throughout the fan.

1. Reversomatic Exhaust Fan
2. Firefighter Radiation Damper. Fits inside Fan Housing
3. Ceiling Grille. Fits over Firefighter Damper

CROSS REFERENCE CHART

| FIREFIGHTER MODEL | FANMODEL | FAN (W x L) | FANHEIGHT W/RADIATIONDAMPER |
|-------------------|----------------------------------|---------------|-----------------------------|
| FF-50 | EB50 ,EB60, EB70 | 8" x 9" | 7.5" |
| | EB-80, EB-100 | 8" x 9" | 7.5" |
| FF-100 | QB-80,-100, -120, -150, -200 | 10" x 10" | 7-1/2" |
| | QCF-95, QCF-110, QCF-125, QB-130 | 10" x 10" | 10-1/2" |
| | QCF-170 | 10" x 10" | 11" |
| FF150 | CFS 150, CFS 250 | 12" x 12" | 11-1/4" |
| | CFS 350 | 12" x 12" | 12" |
| FF-200 | QCF-200, QCF-300 | 18" x 10" | 12-1/2" |
| FF-225 | CF-225, | 13.5" x 13.5" | 14" |
| | CF-375, CF-425 | 13.5" x 13.5" | 15-1/2" |
| FF-400 | QCF-400 | 19" x 12" | 14-1/2" |
| FF-500 | QCF-500,QCF-600, QCF-800 | 24" x 14" | 16-1/2" |
| FF-1000 | QCF-1000 | 32" x 14" | 16-1/2" |
| FF-1300 | QCF-1300, QCF-1600 | 38" x 14" | 16-1/2" |

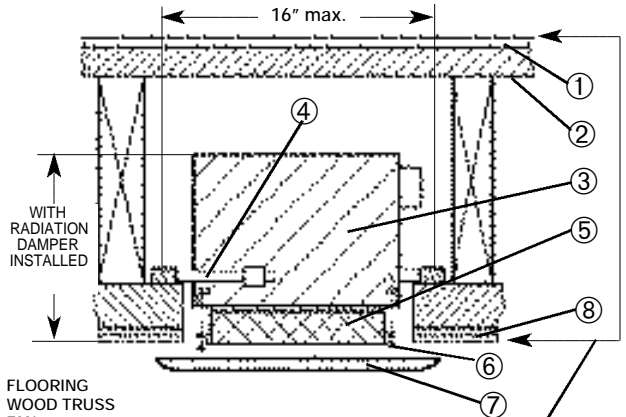
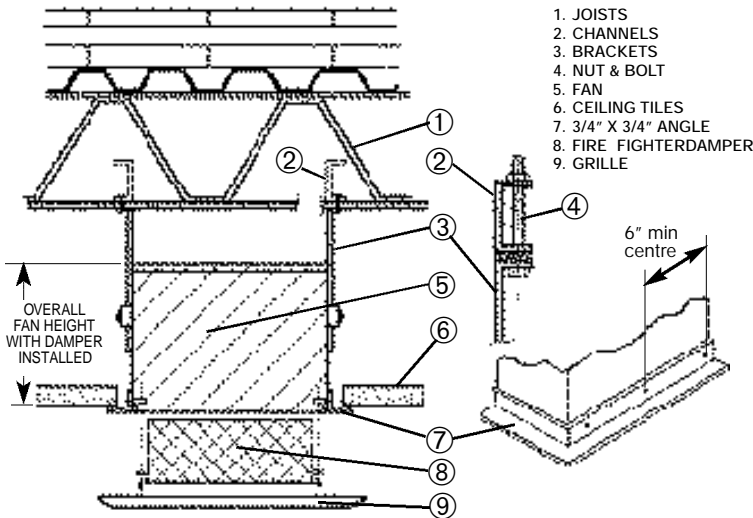


R19310 CR2292
 Rated for UL 555C
 Ceiling assemblies
 up tp 3 hours

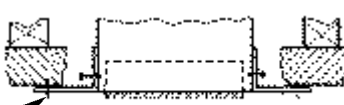
Fire Fighter Typical Installation

The typical installation instruction shown below were implemented to meet the UL555C guidelines. However there are times when minor variances may be necessary

to accommodate certain ceiling designs. This of course should be at the discretion of you local building authorities



1 Hour rated Wood Truss Floor/Ceiling Assembly Typical of UL L528 & UL L534



ALTERNATE - use 2 pcs. of notched angle iron

Certification Information

All APOLLO fans have been certified to meet UL 507 Electric Fan Criteria. APOLLO Fans have been CSA certified to USA standards as identified by the OCCUPATIONAL SAFETY AND HEALTH ADMINISTRATION (OSHA) UNITED STATES DEPARTMENT OF LABOR. Product covered under this certification service required the use of an indicator adjacent to the CSA as shown.



All APOLLO Fans in this catalogue have been tested and certified by HOME VENTILATING INSTITUTE - Division of AMCA (HVI)

